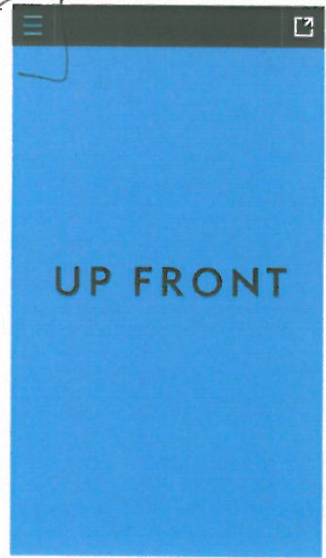


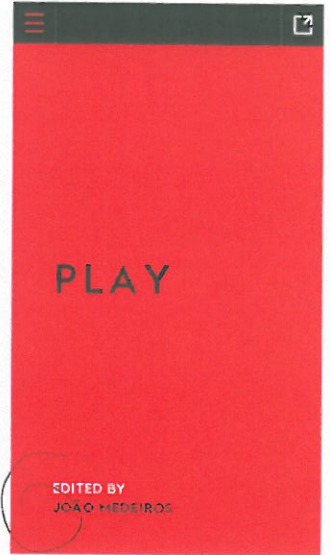
REQUIRED FROM ENSEMBLE

on template this is grey. make black (surrounding box)



position of text alignment to match this.
Baseline of 'IDEAS' to sit with baseline of other section names

on template this is blue, make white (menu icon)



switch colours in copy to match this.

REQUIRED FROM ENSEMBLE

- Both to remain out of menu listings!

New section.

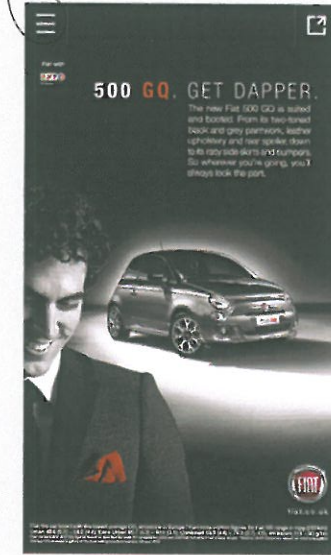


Insider

No firm would employ software developer and ex-con Duane Jackson. So he started his own

Duane Jackson grew up in a children's home in east London. "Then

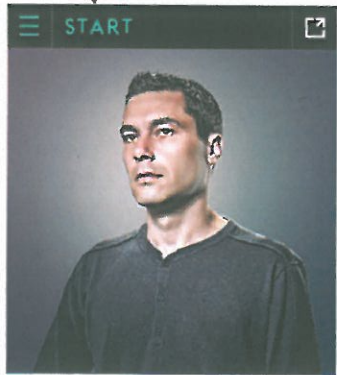
ADS section



2

REQUIRED FROM ENSEMBLE

letter spacing to match this



letter spacing to match this



Text setting to match this

Reformed accounting

No firm would employ software developer and ex-con Duane Jackson. So he started his own

Duane Jackson grew up in a chil-

margins to match this

3

FROM ENSEMBLE



text styling incorrect.



From the Editor

You may have noticed our cover's regular declaration that wired is a magazine about Ideas. Technology. Business. Design (among many other areas of innovation). This month.



Inferno information

One morning in May, fire safety engineers set this hall in Watford on fire. They lit 12 propane-gas burners to see how hot a room gets in a real blaze.



Master Builder

Thomas Heatherwick's ambitious fervour and obsession with detail have created the Olympic cauldron and the London bus. But how will he design his studio's growth



Master Builder

Thomas Heatherwick's ambitious fervour and obsession with detail have created the Olympic cauldron and the London bus. But how will he design his studio's growth strategy?
By Tom Cheshire
Photography: Olaf Blecker

The newest item in the studio of Thomas Heatherwick, the designer of the Olympic cauldron.

The master files show no breaks in the copy at top of page. Needs a look.



Solid Results

Mail-order 3D printing For those not ready to invest in a printer, or those looking to have their prototypes printed in new materials on industrial machines, online services let you upload a



Patently Untrue

Here's one way to gather data on what fire does to a building - set it alight

Julian Blecker of Near Future Laboratory invented the

DELIVERED FROM ENSEMBLE

